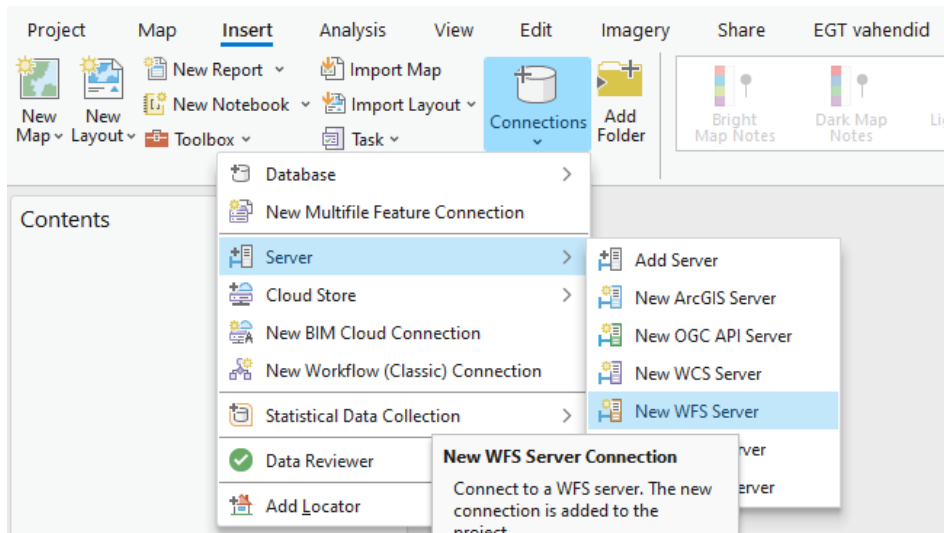




Maardlate WFS teenuse kasutamine ArcGIS Pro

1. Loo ühenduse WFS teenusega



2. Lisa aknasse WFS address

<https://maps.egt.ee/geoserver/maavarad/ows?service=WFS&version=2.0.0&request=GetCapabilities> ja vajuta OK nuppu

The screenshot shows the 'Add WFS Server Connection' dialog box. The 'Server URL' field contains the URL: `https://maps.egt.ee/geoserver/maavarad/ows?service=WFS&version=2.0.0&request=GetCapabilities`. Below the URL field, there are 'Examples' of URLs. The 'Version' dropdown is set to 'Default version'. The 'Custom request parameters' section is expanded. The 'Authentication (Optional)' section has 'Username' and 'Password' fields. The 'Save Login' section has 'Windows Credential Manager' checked and 'Connection file' unchecked. The 'OK' button is highlighted in yellow.

3. Catalog paani vaates saab avada teenuse kihtide loendi ja need kaardivaatesse lisada.

